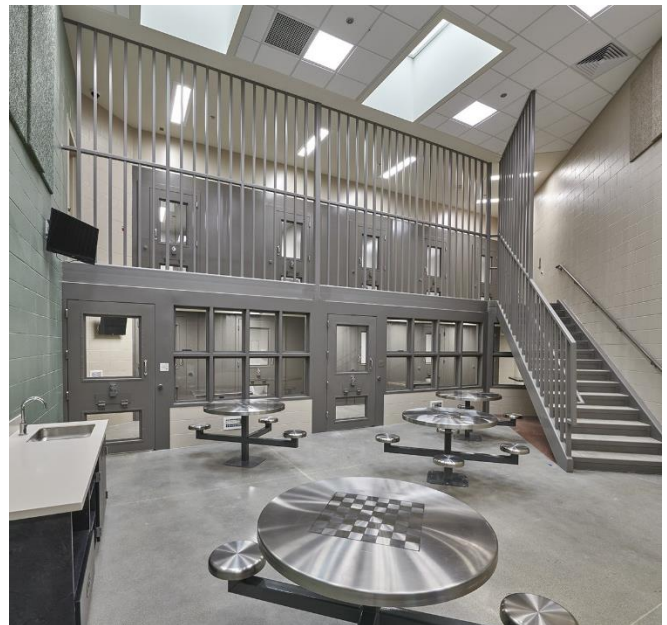


BROOKINGS COUNTY DETENTION CENTER
BROOKINGS, SD



This project involved the programming and construction of a new addition to the Brookings County Courthouse. The project team was tasked with creating an operationally sound building with optimal circulation, accommodating an expanded bed count, and remodeling existing law enforcement spaces. The kitchen includes a manager’s office and staff restroom, along with ample production space to prepare and assemble meals for delivery to each unit.

Deliveries enter a drive-through sallyport so a third-party foodservice contract management company can operate the secure kitchen without entering the jail space. Storage areas include generous walk-in cold storage as well as dry storage spaces, so the facility can take larger deliveries less frequently.

Hot production includes equipment flexible enough to accommodate a variety of menu options and ware washing is conveniently located to handle the pot and pan washing functions from the kitchen, as well as all the soiled trays returned from each unit.

Details

Opening Date: March 2022
Equipment Cost: \$200,000
Peak Meal Volume: 84 Inmates
Kitchen Size: 1,000 SF

Scope

New Addition
Renovation
County Jail Foodservice